



# PRMS Seismic Mitigation Project Update

**Monday, February 24, 2020**

Presentation to Prince Rupert City Council

# Project History

2008 – Ministry Budget Allocation

2011 – Removed from Seismic List

2015 – Returned to Seismic List

2016 – District Facilities Plan Submitted

2016 – Project Identification Report Submitted

2017 – Site Selection Study Completed

2018 – Provincial Election

2018 – Ministry ask for Project Definition Report

2020 – Ministry asks for Concept Plan

# Site Search Criteria

Criteria	Score
Distance from center of town	10
Availability of outdoor fields/ball diamonds	8
Property size difference relative to current site	5
Distance from public transit	2
Distance from elementary schools	2
Distance from high schools	2



School District No.52  
 Prince Rupert Middle School  
 Site Identification

Overview of School  
 Site Options

Legend

- Site Options
- Open School
- Private School
- Playfields
- 200m from Playfield
- SD52 Property
- Ownership Type**
- Municipal
- Crown Agency
- Crown Provincial
- Federal
- Private
- Unknown
- Mixed Ownership
- None

The accuracy & completeness of information shown on this drawing is not guaranteed. It will be the responsibility of the user of the information shown on this drawing to locate & establish the precise location of all existing information whether shown or not.



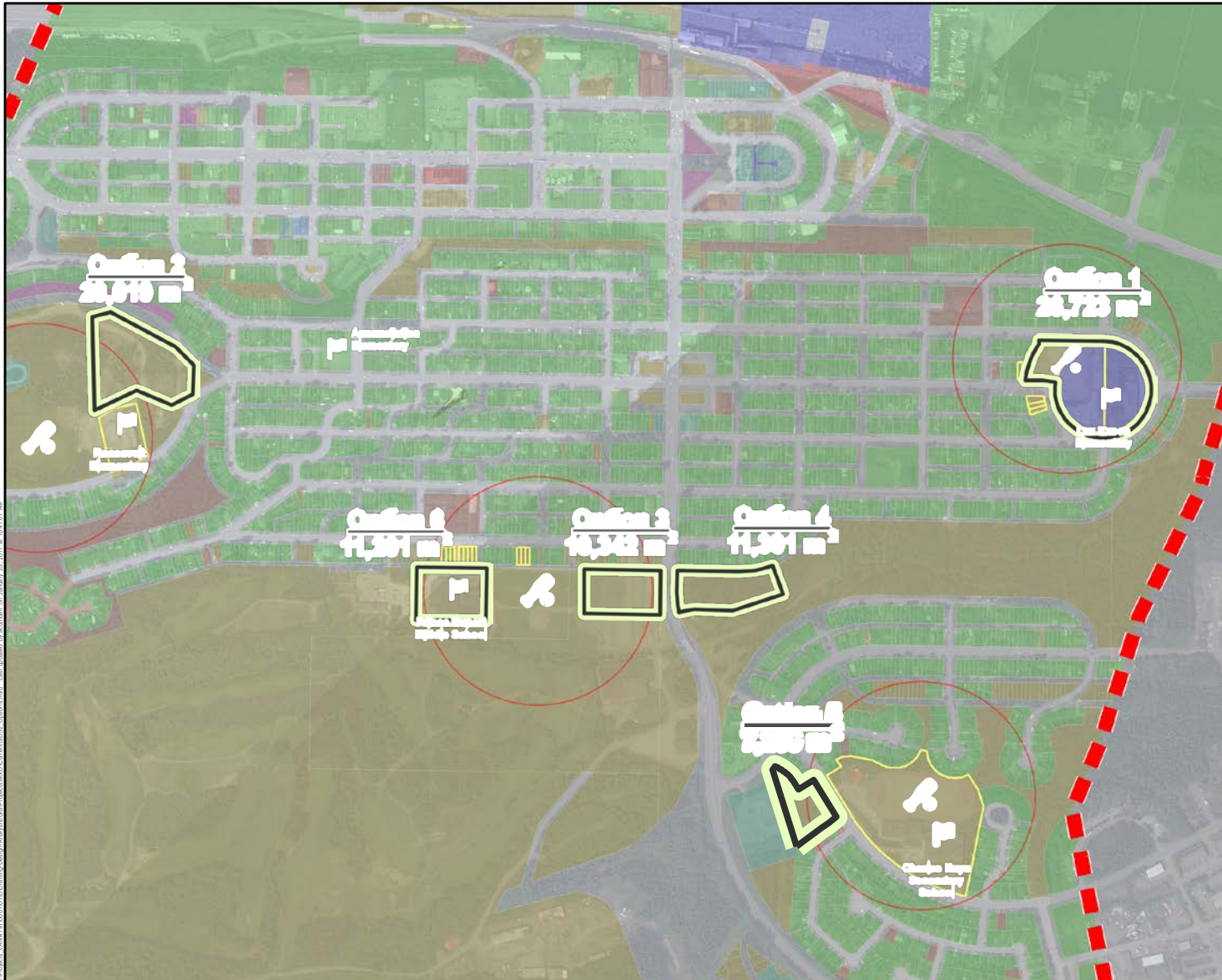
Coordinate	System:
ate:	Sc
NAD	1983
UTM	Zone
10M	118
.500	

Data Sources: PaceMap BC  
 Services Layer Credits: Source: Esri, DigitalGlobe, GeoEye, Earthstar Geographics, CNES/Airbus DS, USDA, USGS, AEX, Getmapping, Aerogrid, IGN, IGP, swisstopo, and the GIS User Community

Project #:	4197.0001.01
Author:	AC
Checked:	AC
Status:	-
DRAFT:	-
Revision:	A
Date:	2017 / 1 / 26



FIGURE 5



U:\Projects\WAK\187000101\187000101\02\Drawings\Design\Analysis\GIS\Options\MiddleSchool\Overview\52-052-0001-01.dwg, 26 January 2017 at 10:41:01 AM

# Closed Schools - Walking

- Parry Place to Kanata 5.3 km
- Alpine Drive to Kanata 5.4 km
  
- Parry Place to Seal Cove 5.2 km
- Alpine Drive to Seal Cove 5.3 km
  
- Seal Cove Circle to Westview 5.2 km
- Immanuel Street to Westview 5.1 km

# Site Factors to Consider

- Geotechnical
- Traffic
- Site Size – impacts how many floors
- Availability

# Design Factors to Consider

- Ministry Area Standards
- Ministry Unit Rates
- LEED Gold
- Neighbourhood Learning Centre
- Daycare
- GBA+ (Gender Based Analysis)
- Net Zero Ready Analysis

# Plan Requirements

Report must provide multiple options

Seeking public input to include in the report

**Seismic Program supports the lowest cost option**



# Site Options

1. Existing Site
2. Adjacent Site (City Land)
3. Kanata Site
4. Booth Site

# Existing Site

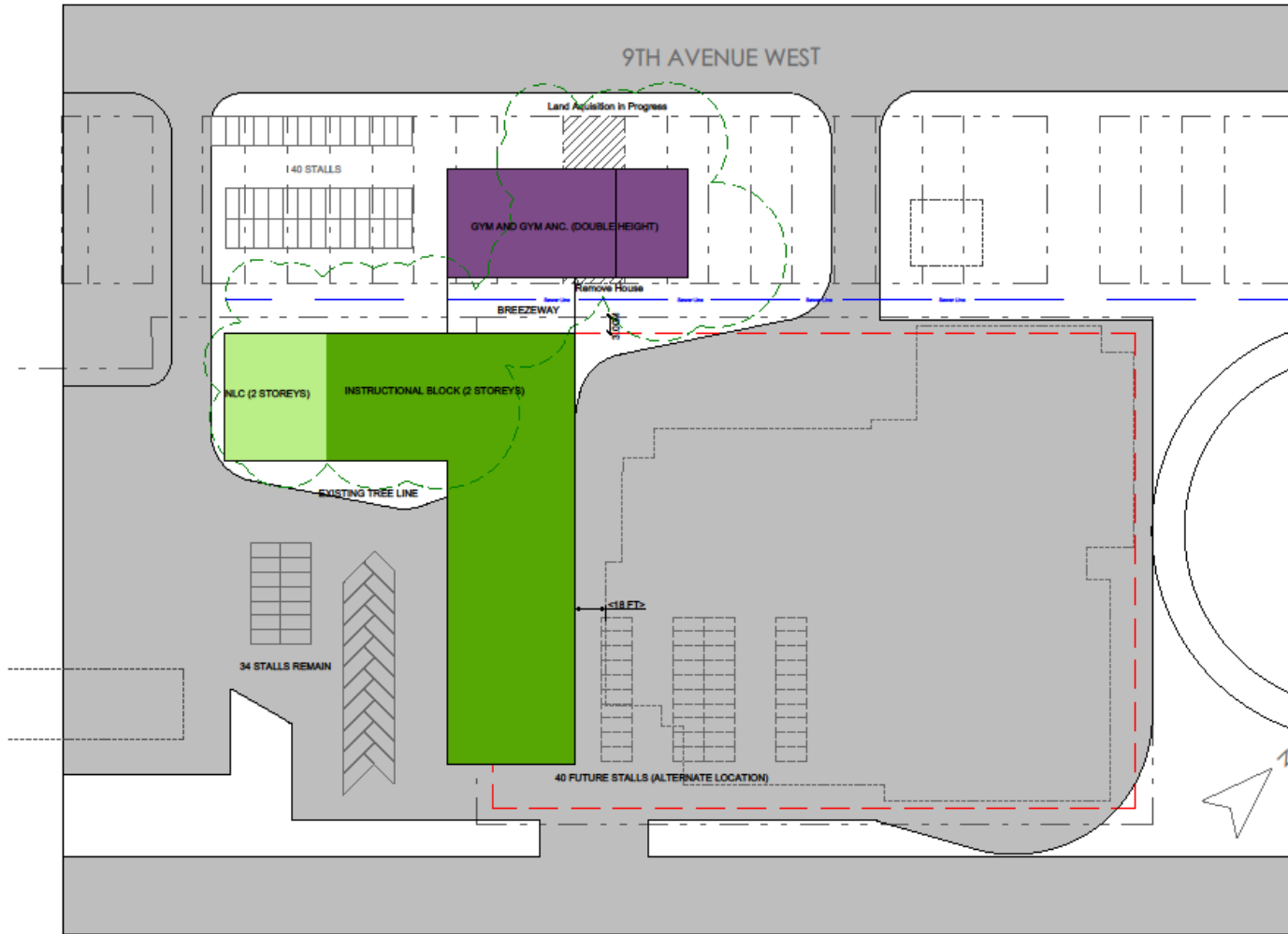


EXISTING SITE TEST FIT - LEVEL 1

# Temporary Westview Layout

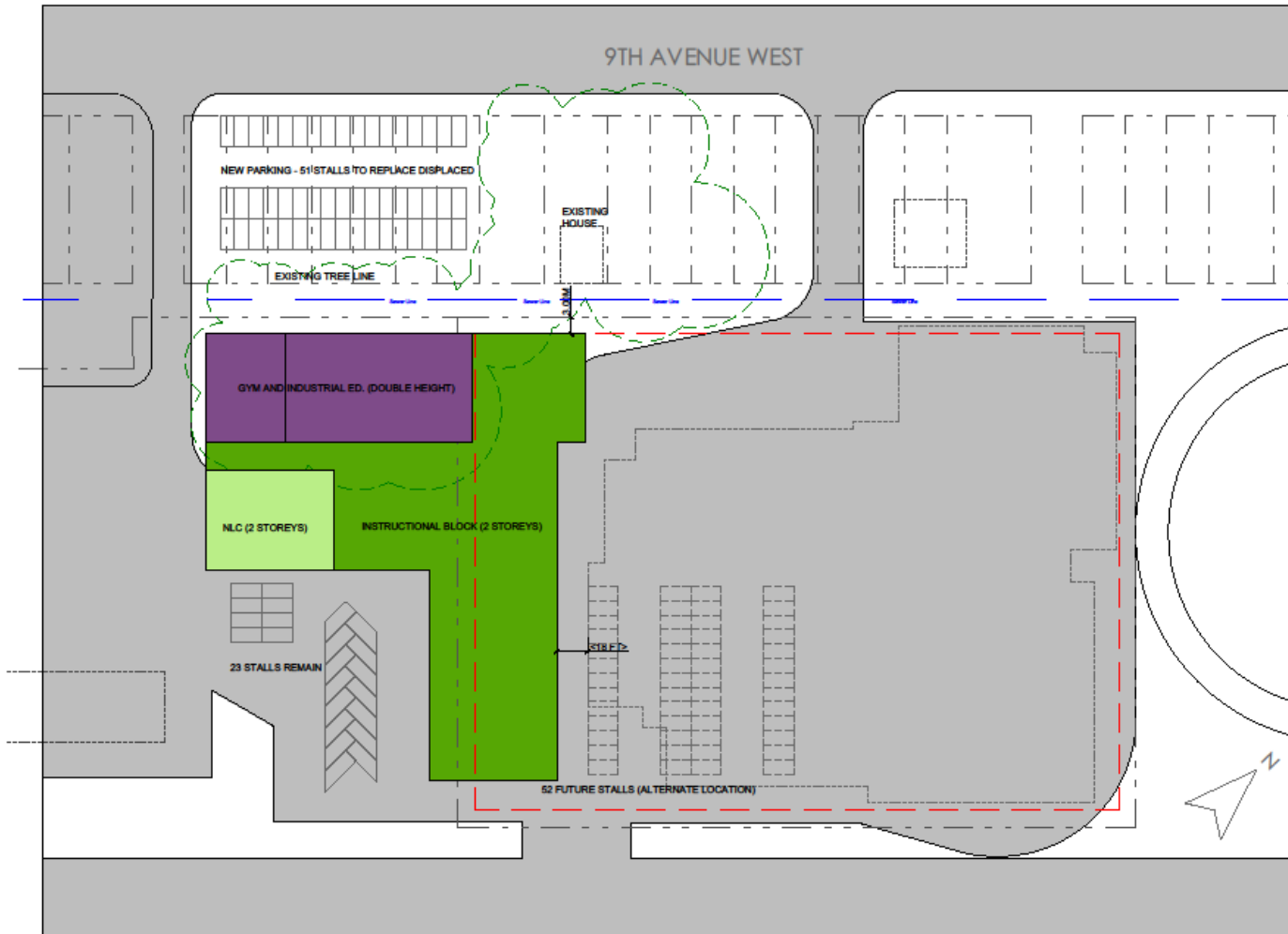


# Adjacent Site



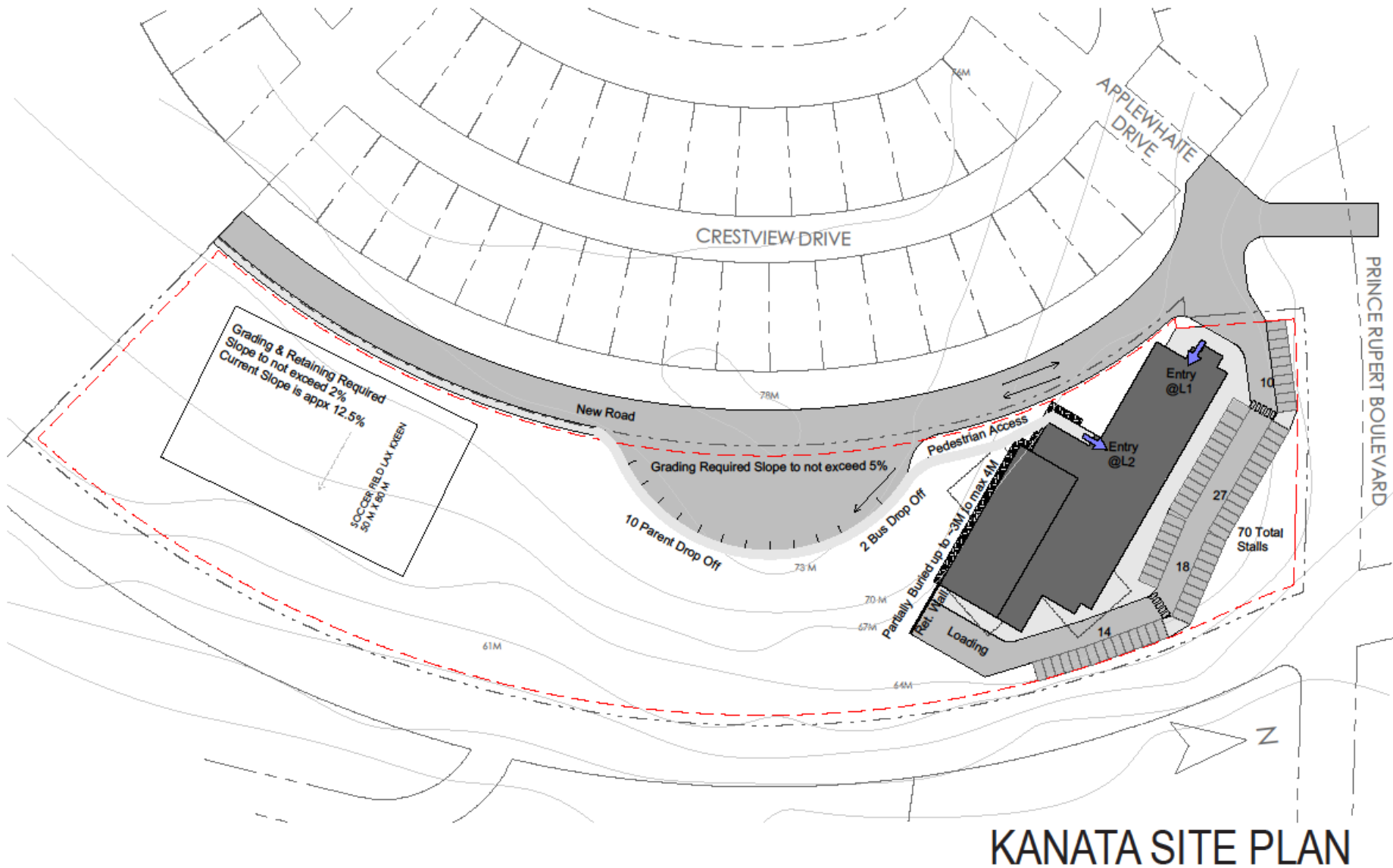
OPTION 1 - DISTURBED HOUSE - 40 DISTURBED PARKING STALLS

# Adjacent Site



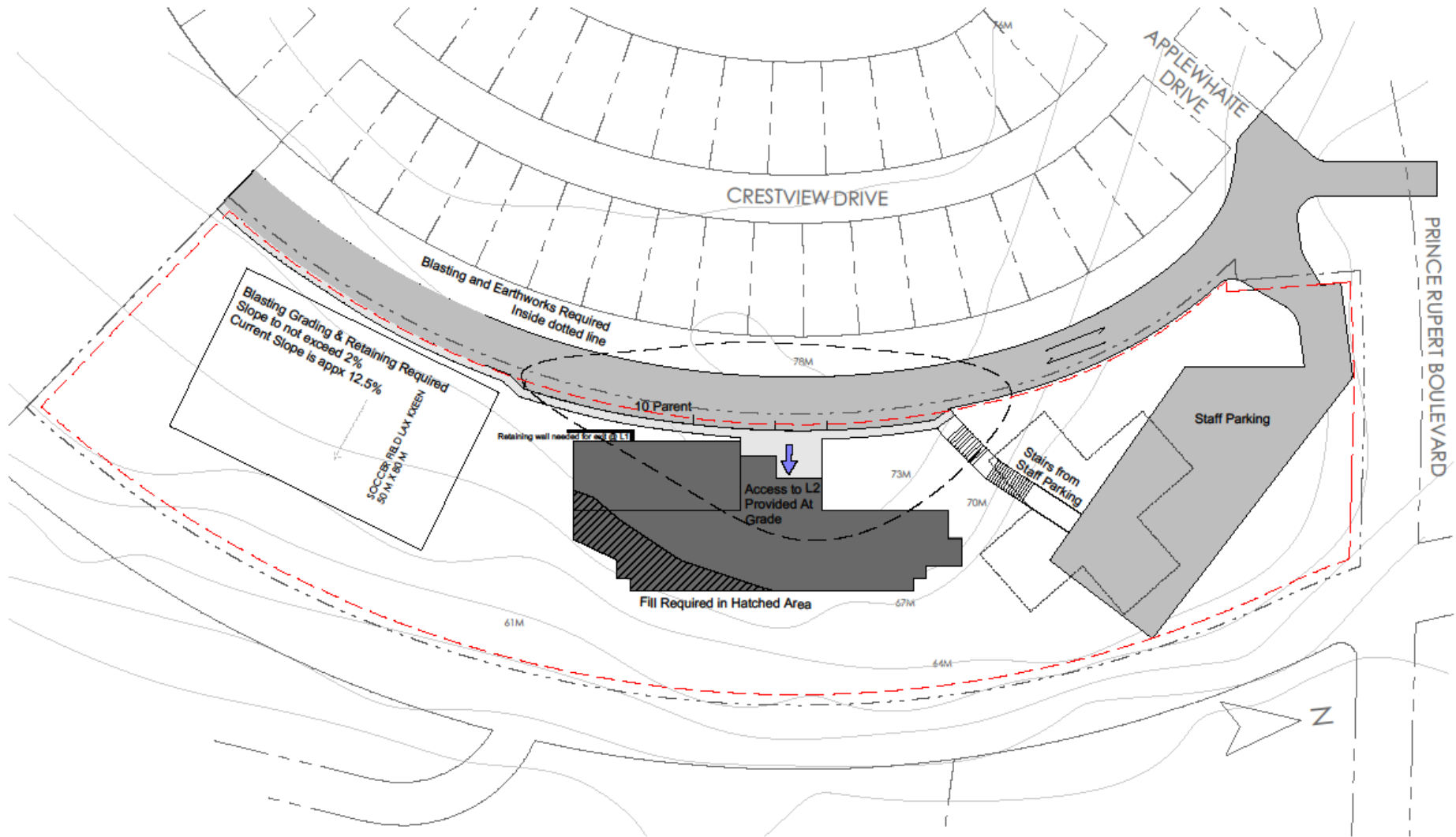
OPTION 2 - HOUSE KEPT - PARKING ADDED @ NORTH EXTENTS

# Kanata Site



KANATA SITE PLAN

# Kanata Site



KANATA SITE PLAN - CENTRE PLACEMENT

# Booth Site



Booth Site Test Fit - Middle School 600 Students - Level 1



# Next Steps

- Open House February 27, 2020 at PRMS
- Public Survey on Site Options
- Concept Plan Submission by March 31, 2020
- Ministry Submission to Treasury Board
- Project Definition Report Submission
- Ministry Submission to Treasury Board
- Treasury Board Approval